

Elevate

Get high on the green life



MD Speaks



Dear Readers,

Greetings from the Olympia Group! We sincerely hope that 2017 has been treating you well thus far.

Chennai city witnessed a lot during the last phase of 2016, post the Diwali celebrations. From demonetization to the passing of our Chief Minister to the havoc wrecked by Cyclone Vardah in the city. But Chennai being who she is, bounced back to normalcy in a flash. With it, so has the city's real estate market.

There appears to be light at the end of the tunnel as there has been no better time to invest in real estate than now. With interest rates at a low and minimal escalation in ticket price, more and more people are looking to make value-driven investments in real estate.

This is the time when the most credible builders in the city will come to the forefront. Discerning customers have a good understanding of the market and make educated, well-researched purchase decisions.

On that note, I am happy to update you on the status of some of our key projects:

Handovers in our Opaline Sequel project on the main OMR, Navalur are well and truly in progress.

As a wonderful new addition to the Opaline community, I am pleased to inform you that the renowned Velammal CBSE school is coming up on-site and is scheduled to open shortly!

Another super-luxury project, The Goodwood Residence located on the coveted Cenotaph Road in the heart of the city is set for an exciting unveiling soon and we are very enthusiastic about this.

We are also proud to announce that Mithila, Olympia's plotted development in Tirumazhisai, located just 800m from the Bangalore Highway has been selling out rapidly with over 60% of the plots already sold out!

As we enter a brand new financial year I would like to take this opportunity to wish everyone the utmost joy and prosperity for the year ahead.

Khivraj Tech Park Pvt. Ltd., Olympia Infratech Pvt. Ltd.,
Olympia Technology Park, Plot #1, SIDCO Industrial Estate, Guindy, Chennai 600 032.
Email: sales@olympiagroup.in | Phone: +91 44 4356 3773 / 74 / 75 Fax: 044 4356389

For Private circulation only.

UltraTech Award 2016

We are proud to announce that Olympia Grande has won the UltraTech Award 2016 for Outstanding Concrete Structure in the Residential Category in September.



Opaline^{OLYMPIA}

Living life, water side

Navalur, OMR

Olympia Opaline is one of the best gated communities on the OMR. More than 1150 happy families have moved in.

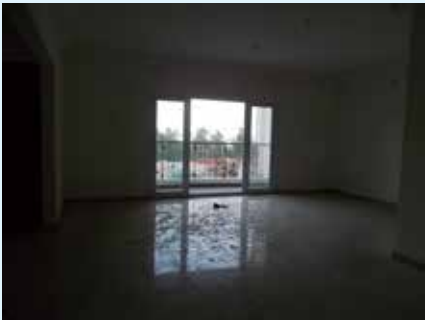
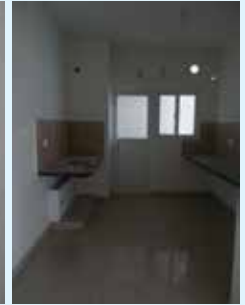


Opaline Sequel

Navalur, OMR.

Work In Progress

Handovers are in progress in Olympia Opaline's next phase - Opaline Sequel which is now almost nearing completion.



Sequel Handover

Olympia Opaline Sequel has shaped out to be one of best gated community apartments on the OMR. The handover of the apartments has commenced, with more than 100 apartments already delivered. The customers are carrying out their interior works in full swing.



Opaline
Sequel
Navalur, OMR.

Olympia OMR Run

Olympia, in connection with the Rotary Club of Chennai Upscale's inaugural edition, sponsored the Olympia OMR Run. The proceeds from the event were used to fund government schools - infrastructure and development in the Pudupakkam, Thaiyur and Kadalur areas. The event featured 3Km, 5Km and 10Km runs which started at Sathyabhama University. It was a huge success with more than 3000 runners participating in it.





These beautifully designed apartments in Pallavaram, are located with easy access to the airport and railway station. With on-site amenities like a grocery store, ATM, Clinic and more, you are never far from access to your daily needs. The property also houses Club Grande, a state-of-the-art clubhouse featuring gym, swimming pool, yoga, jogging track, indoor games arena, coffee shop, banquet hall and much more. It is truly a home to suit your lifestyle.



Grande Handover

"Olympia Grande" is the proud address and landmark for many people today at Pallavaram, with more than 600 apartments being handed over and customers doing their home interiors. Our support from shortlisted Interior design vendors with packages to ease the pain of interiors and coordination at site has been widely appreciated by customers. M/s.Jones Lang Laselle handles the property management team.



Plant More Trees

Lets make Chennai green again

Cyclone Vardah hit our city hard. Trees were fallen on the roads, weaker structures were destroyed and communication lines were down. The buildings were renovated, the billboards put up again and telephone lines restored, but there was one aspect of the natural disaster which would take years, if not decades, to heal – the felling of a staggering number of trees.

We have wasted no time in starting the process of healing, and have decided to re-plant trees and provide saplings to people to restore our city.

Here's why you too should take a vow to plant as many trees as possible:

Trees conserve energy

Trees properly placed around buildings can reduce air conditioning needs by at least 30%.

Trees increase property values

The beauty of a well-planted property and its surrounding street and neighbourhood can raise property values by as much as 15 percent

Trees shield children from ultra-violet rays

Trees reduce UV-B exposure by about 50 percent, thus providing protection to children on school campuses and playgrounds - where children spend hours outdoors.

Trees combat climate change

In one year, an acre of mature trees absorbs the amount of CO₂ produced when you drive your car 26,000 miles.

Trees provide oxygen

In one year an acre of mature trees can provide enough oxygen for 18 people.

Trees cool the streets and the city

Trees cool the city by up to 10°F, by shading our homes and streets, breaking up urban "heat islands" and releasing water vapour into the air through their leaves.



OLYMPIA 
Mithila
Plots at Thirumazhisai

On-Site Images

These CMDA approved plots sizes range from 543 sq.ft. to 4346 sq.ft. and are located in Thirumazhisai. It is part of an integrated gated community with easy access to medical facilities, acclaimed schools, colleges, recreational facilities and daily needs.



Nalla Neram Vandachu!

Nalla Idam Kidaichachu!

Plots At Thirumazhisai
800m from Bangalore Highway and
600m from Thiruvallur Highway
**Unmatched Location!!
Unmatched Affordability!!**

Call: 9025 600 900



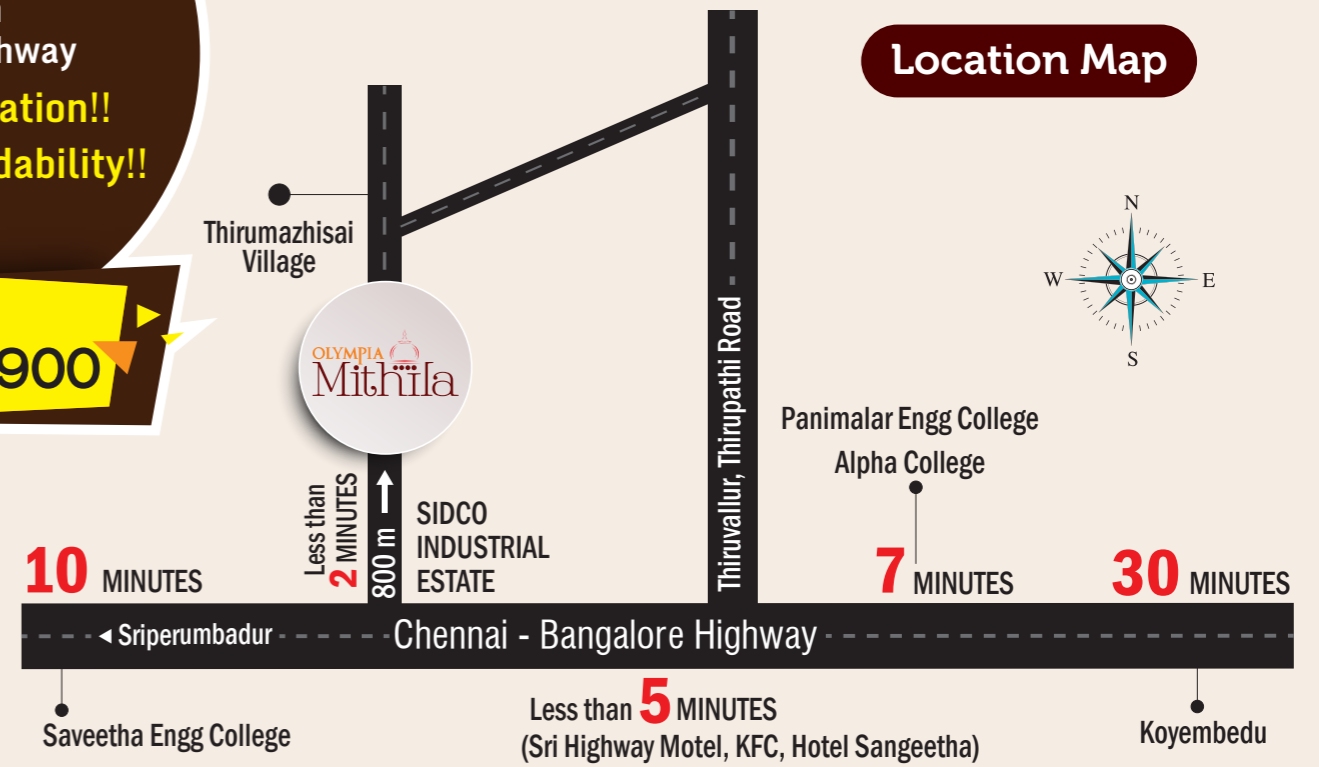
CMDA Approval :
PPD LO no.38/2016
(C.M.D.A. file Ref no.
L1/12888/2014)

Plots available: 543 sq ft to 4346 sq ft.

CMDA APPROVED | PART OF AN INTEGRATED TOWNSHIP | UPTO 80% BANK LOAN ELIGIBILITY

Well-lit, safe roads | Well-developed residential locality | Ready for immediate construction
Close to many acclaimed schools and colleges | From the trusted Olympia Group

HURRY! OVER 60% SOLD OUT!



*T&C Apply

Project approved by:



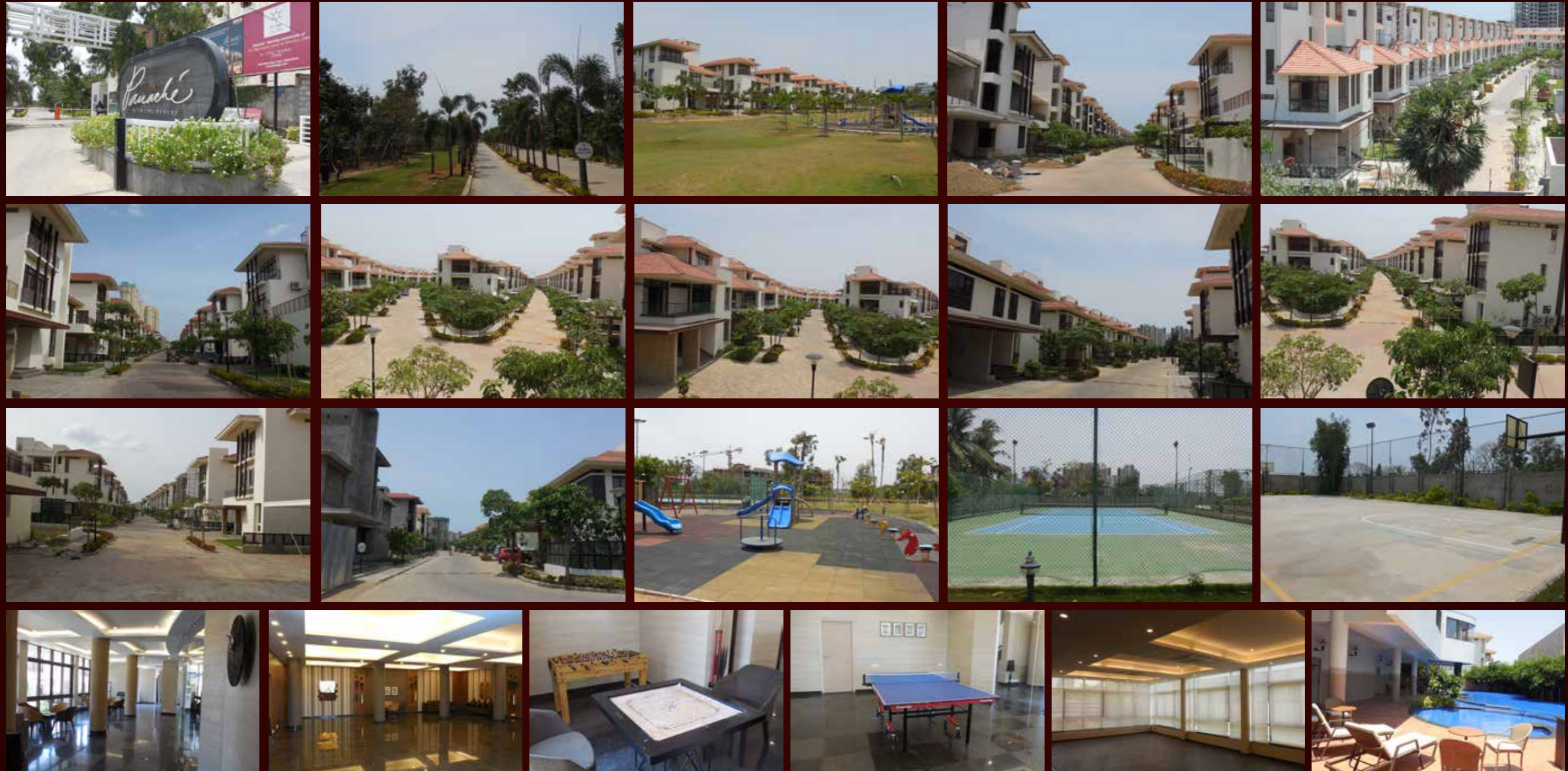
State Bank of India | /olympiagroup | sales@olympiagroup.in | www.olympiagroup.in

OLYMPIA Mithila

Plots at Thirumazhisai

Nedunchery / Chembarambakkam Village,
Poonamallee Taluk, Thiruvallur District, Chennai - 600124.

Olympia Panache has truly lived up to the expectations and has become a world-class villa community. More than 30 families have moved in and more residents are doing their interior works at brisk pace.



Navigation At Your Fingertips

A car rally for visually challenged people

The Madras Round Tables 94 & 124, RCC Platinum and Ladies Circle 38 in association with National Federation of the Blind and Madras Motor Sports Club organized a unique car rally for visually challenged persons on Sunday - 11th June 2017, at our Olympia Technology Park.

This Round Table India - Area 2 event registered more than 75 participants to the show. The navigators used Braille charts to guide their respective drivers through the city.





Kotturpuram, Chennai

Work In Progress

The Park Residences project has turned out as planned. Construction is progressing as per schedule with structural and civil works being completed. This would be an address to look out for!!



CHENNAI'S MOST COVETED ADDRESS

OLYMPIA



THE
PARK
RESIDENCES

31 ULTRA LUXURY APARTMENTS SPREAD ACROSS 1.3 ACRES IN THE HEART OF KOTTURPURAM.
ALREADY HOME TO THE CITY'S WHO'S WHO.
DESIGNED BY SUYING METROPOLITAN STUDIOS, SINGAPORE.

Handover commenced

Site Address: Kotturpuram, Vellaiyan Road, Chennai - 85.

Email: sales@olympiagroup.in Website: www.olympiagroup.in



CREDAI



To visit our model apartment,
please call + 91 97909 37186

Our Social Media Joins

OLYMPIA



Like us

<https://www.facebook.com/olympiagroup>



Follow us

<https://twitter.com/olympiagroup>



Watch us

<https://www.youtube.com/user/olympiagroup>



Connect with us

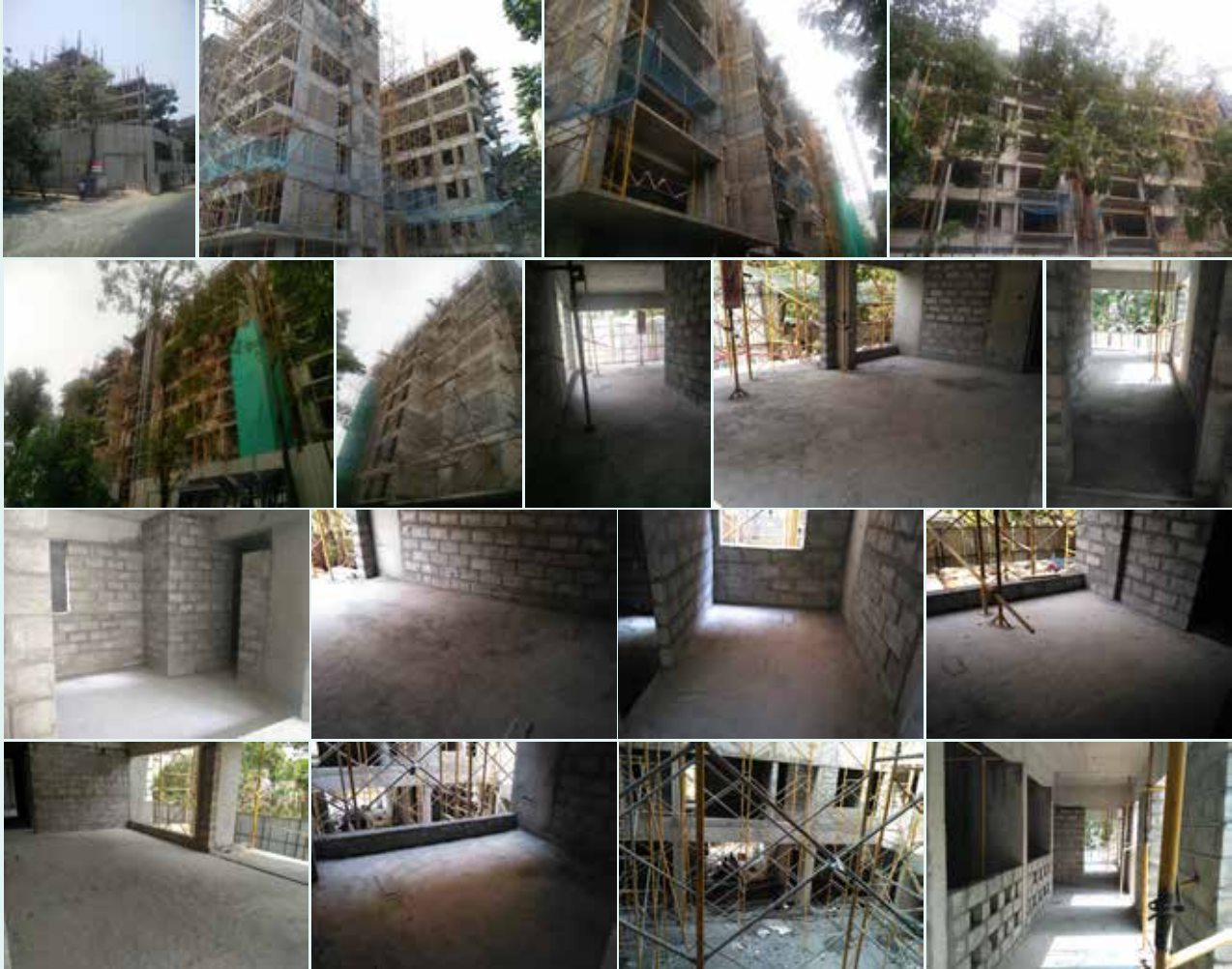
https://www.linkedin.com/olympia/olympia_group

sales@olympiagroup.in | www.olympiagroup.in

THE
GOODWOOD
RESIDENCE
CENOTAPH ROAD, CHENNAI

Work In Progress

The construction process is steadily progressing as per schedule and the structure is set to be erected in a month. The brick work for apartments has commenced.



REFLECTION



A PLACE TO PAUSE
Thiruvидanthai, ECR

Work In Progress

Reflection has set new benchmarks with its luxury Villas and Sky Apartments in Chennai. The tower structure erection work is completed. The model apartment is ready for viewing. To book an appointment please call us on 90944 56666.



Our Projects

Opaline
Sequel

Navalur, OMR

Opaline OLYMPIA
Living life, water side

Navalur, OMR

THE
GOODWOOD
RESIDENCE

Cenotaph Road

OLYMPIA 
Mithila
Plots at Thirumazhisai

Thirumazhisai

THE
PARK
RESIDENCES

Kotturpuram, Chennai

SKY
VILLAS


Navalur, OMR

Panache OLYMPIA
villa residences

Navalur, OMR


OLYMPIA
Grande

GST Road, Pallavaram

OLYMPIA
JAYANTHI
RESIDENCES

LB Road, Adyar

REFLECTION



A PLACE TO PAUSE

Thiruvadanthai, ECR